



# BIOTrade 2020

Munich 2015



# A two minute introduction...

A screenshot of a YouTube video player. The main video area shows a 3D globe of Earth with several red location pins placed across the continents. The video title is "Living in Harmony with Nature (subtitles available)" by WWF International. The video has 1,695 likes and 1 comment. The player interface includes a progress bar at 0:16 / 2:16, a volume icon, and a "Capture" button. To the right, a list of suggested videos is visible, including "Saving Tigers", "Save the macaws and other species in the Amazon - Rio 2 PSA for WWF", "Dreaming of SHARKS", "WWF SOS Jurvena National Park", "Palawan - icon at threat, threatened by coal", and "Alex Howes of Garmin-Sharp on their charity partnership with WWF".

[https://www.youtube.com/watch?v=q7NSYPaAW\\_E8&list=UU5MDIy3yhWDrx0MyDo4QmYg](https://www.youtube.com/watch?v=q7NSYPaAW_E8&list=UU5MDIy3yhWDrx0MyDo4QmYg)

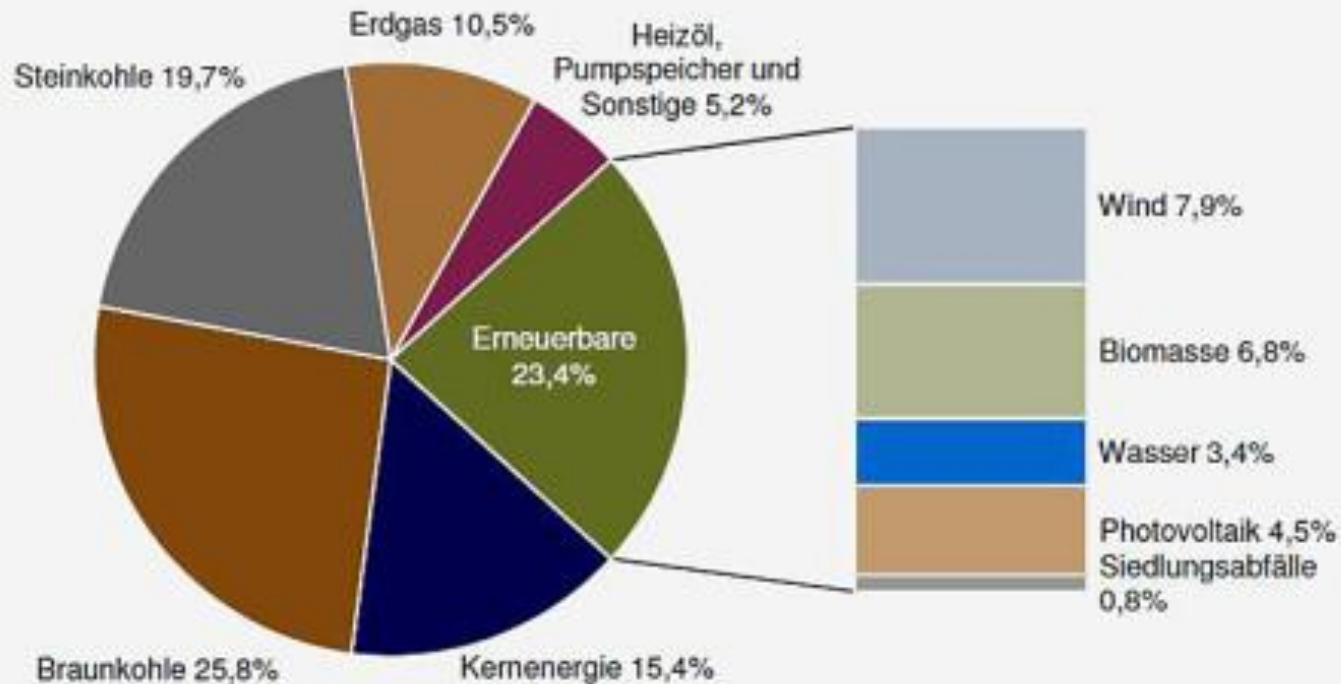


# Germany

## total electricity production 2013



Brutto-Stromerzeugung 2013 in Deutschland: 629 Mrd. Kilowattstunden\*

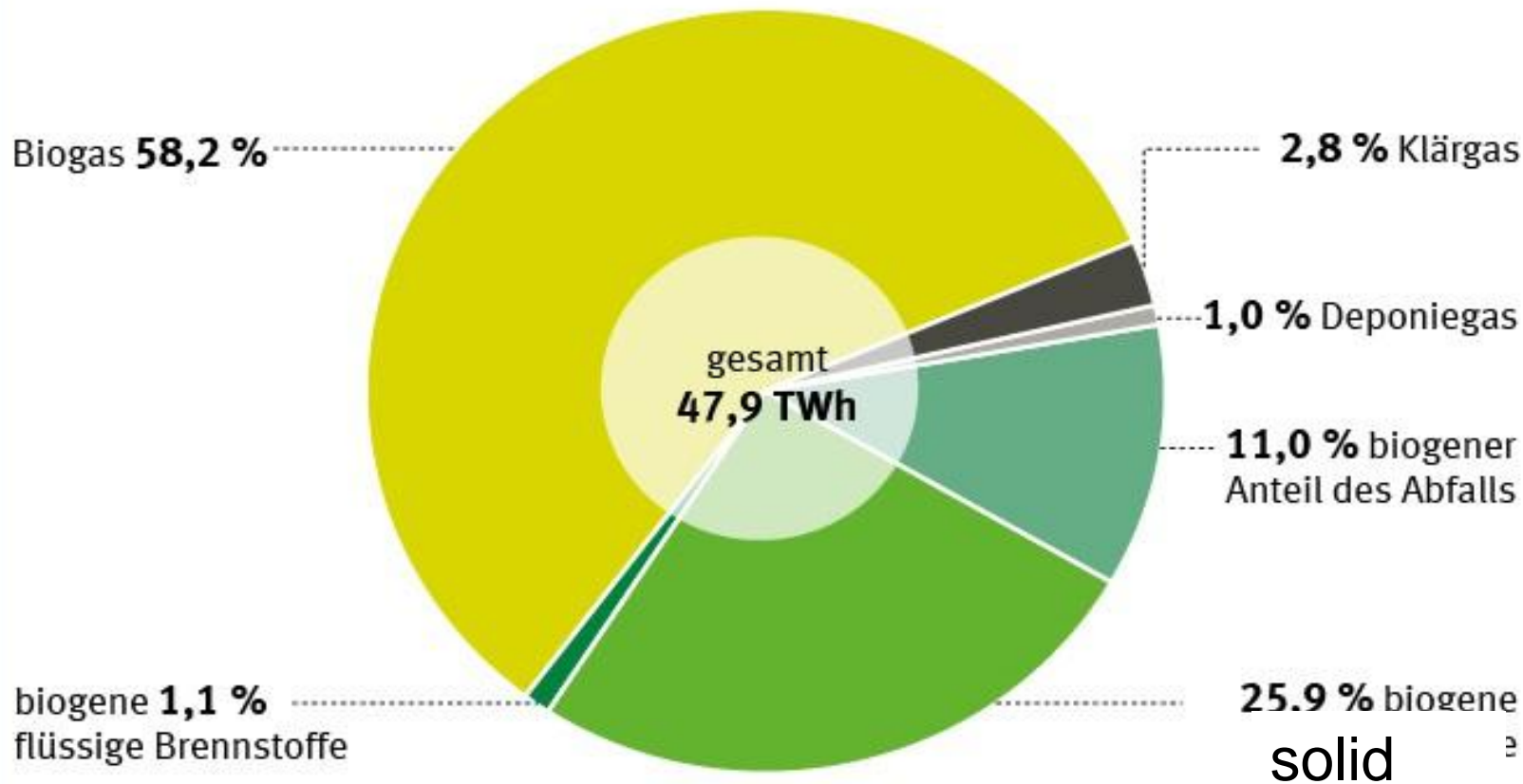


Quellen: BDEW, AG Energiebilanzen Stand: 12/2013

\* vorläufig, teilweise geschätzt



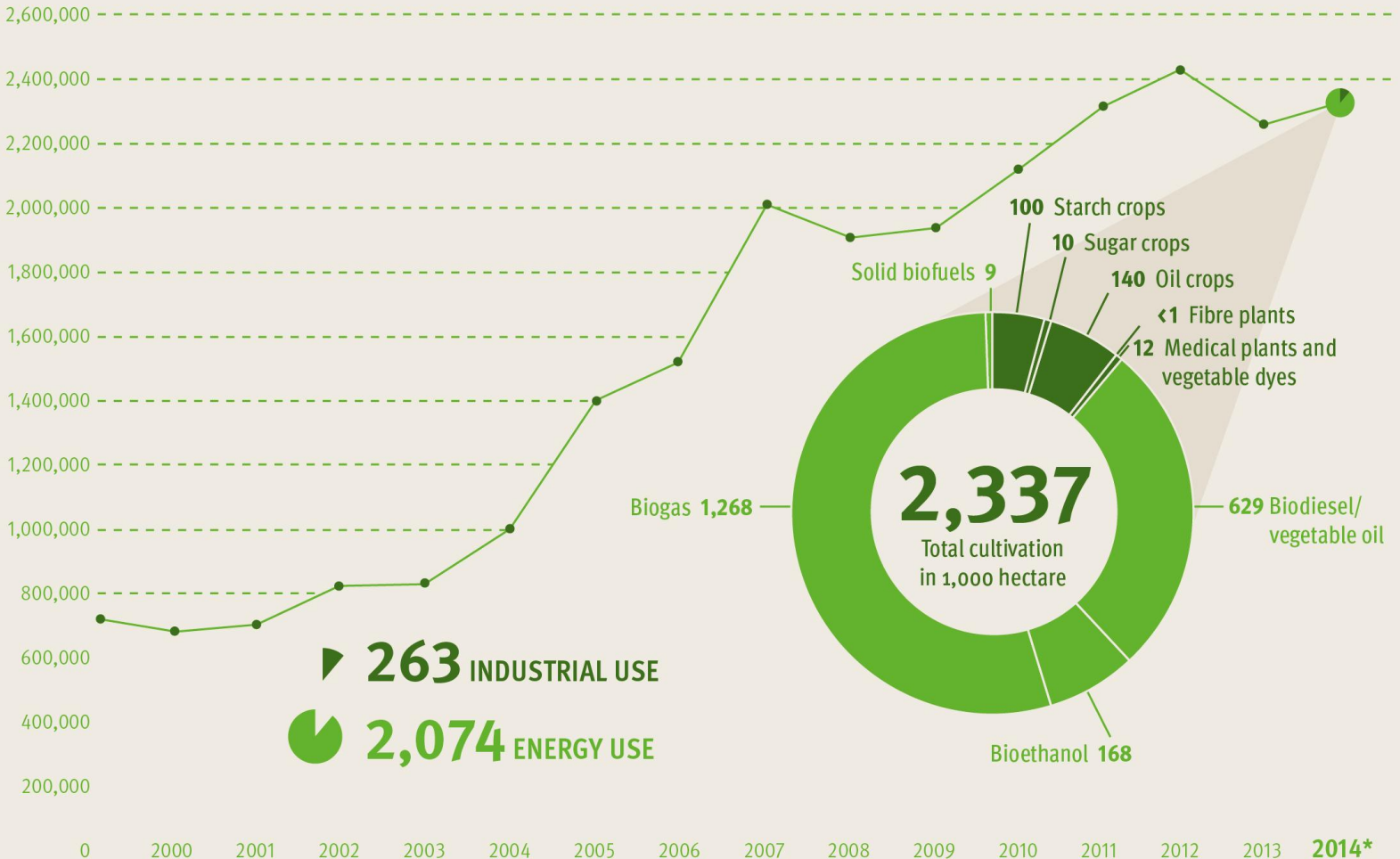
# Electricity from Biomass 2013





# CULTIVATION OF RENEWABLE RESOURCES IN GERMANY

Hectare



Source: FNR (2014); © FNR 2014

\*Estimate

Agricultural area: 16.8 Mio ha;

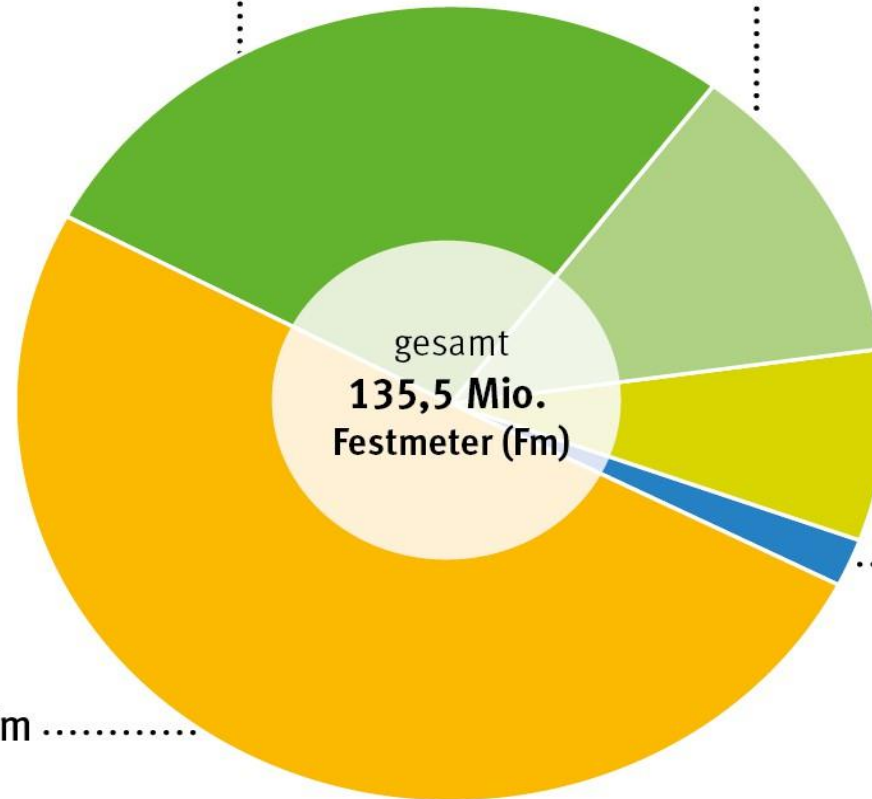


# wood use Germany 2010

Sawing industry

37,3 Mio. Fm

16,9 Mio. Engineered wood



gesamt  
135,5 Mio.  
Festmeter (Fm)

10,6 Mio. P & P

2,3 Mio. Fm Sonstige

Bioenergie 68,4 Mio. Fm

Quelle: Mantau/Holzrohstoffbilanz Deutschland 2012

© FNR 2012

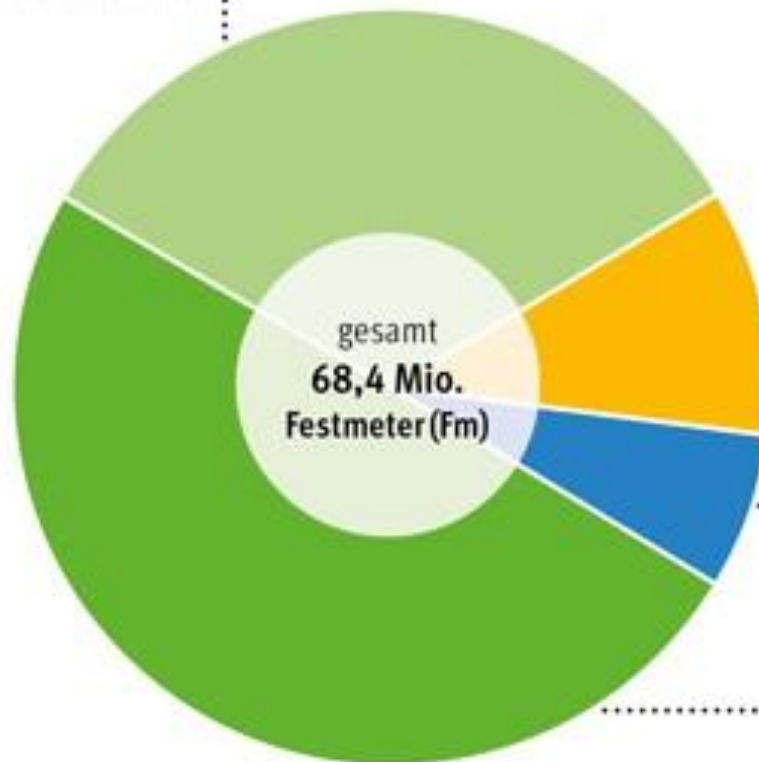
total forest area 11.4 Mio ha



# Germany

## Woody Bioenergy

22,6 Mio. Fm .....  
BHKW/BHW > 1 MW



7,2 Mio. Fm .....  
BHKW/BHW < 1 MW

4,7 Mio. Fm .....  
Sonstige

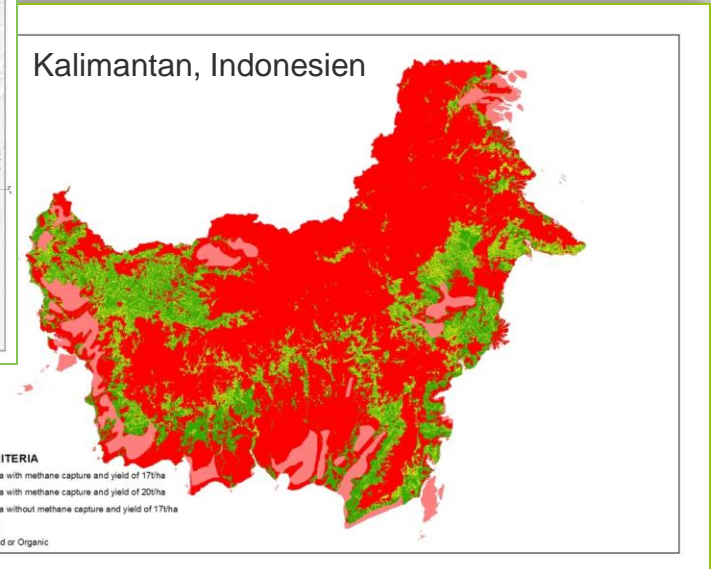
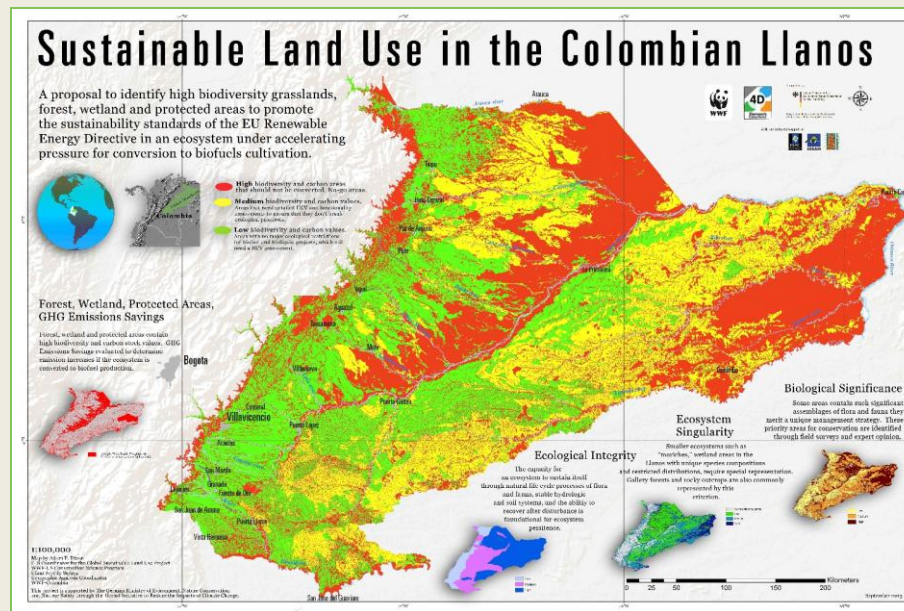
33,9 Mio. Fm .....  
Private household

BHKW: Biomasseheizkraftwerk; BHW: Biomasseheizwerk

Quelle: Mantau / Holzrohstoffbilanz Deutschland 2012

© FNR 2012

# Land Use Management: Identification of Suitable Land for Production of Biomass







**Thank you**